

THIS SHEET DOES NOT REPLACE INFORMATION FOUND IN THE TELONE™ II BY TELEOS LABEL, SDS, OR STORAGE AND HANDLING GUIDE. PLEASE CONSULT THESE DOCUMENTS PRIOR TO MAKING EQUIPMENT OR OPERATIONAL DECISIONS.

METAL COMPATIBILITY MATTERS

TELONE™ by Teleos soil fumigant contains 1,3-Dichloropropene (1,3-D), which can degrade certain metals when product is left in contact for extended periods. Incompatible materials may corrode, weaken, or release residue, leading to sticking valves, restricted flow, leaks, or equipment failure.

Using approved metals is essential for safe, reliable TELONE™ storage, transfer, and application. Proper material selection helps prevent equipment damage, product contamination, and loading or application delays. Maintaining an inert, dry atmosphere in TELONE™ equipment helps minimize corrosion across all metals and supports long-term equipment integrity and reliable operation.



Tanker unloading operations with proper valves.

RECOMMENDED METALS FOR TELONE™ SERVICE

- **CARBON STEEL:** Standard and preferred material for most TELONE™ storage, bulk tanks, pumps, transfer lines, and valves.
- **STAINLESS STEEL (300-SERIES):** Highly compatible and preferred for valves, adapters, metering equipment, and precision components.
- **BRASS/BRONZE:** Generally acceptable for fittings on application equipment and valves when low-lead alloys are used.

METALS NOT RECOMMENDED FOR TELONE™ SERVICE

- **ALUMINUM, TIN, ZINC, OR THEIR ALLOYS:** Not recommended for valves, adapters, pumps, meters, or any component that is in direct contact with TELONE™.

Aluminum may corrode or degrade when exposed to TELONE™, particularly when product is trapped in components between uses. This degradation may not be immediately visible but can result in rapid mechanical failure and hazardous decomposition.

COMMON EQUIPMENT AREAS TO REVIEW

Handlers should confirm metal compatibility for all TELONE™-wetted components, including:

- Trailer and bulk tank valves
- Transfer hoses and dry-lock adapters
- Application rig plumbing and tip-ups
- Metering and flow-control equipment
- Any custom adapters

BEST PRACTICES

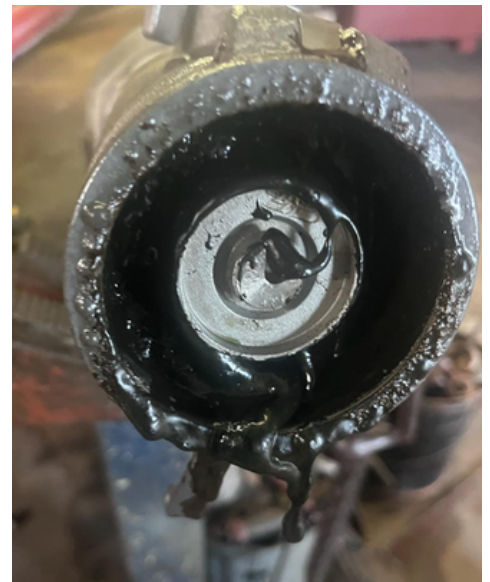
- Avoid aluminum components anywhere TELONE™ may contact metal
- Drain and properly secure equipment after each use to prevent trapped product
- Inspect valves and adapters regularly for sticking, discoloration, or residue
- Replace questionable components approved materials
- Verify material compatibility before installing replacement or aftermarket parts



Aluminum valve with TELONE™ residue left inside.



Stainless steel custom adapter for loading.



Degradation of valve internals due to incompatibility.

NOTICE: The information, procedures, methods, and recommendations herein are presented in good faith and are believed to be accurate and reliable as of the publication date but may well be incomplete and/or not applicable to all conditions or situations. No representation, guarantee, or warranty is made as to the accuracy, reliability, or completeness of said information, procedures, methods, and recommendations. Nor is any representation, guarantee, or warranty made that application or use of any of the same will avoid hazards, accidents, losses, damages, or injury of any kind to persons or property, or give desired results, or that the same will not infringe patents of others. Nor does the information, procedures, methods, and recommendations herein represent the views of any organization or person other than that of the author unless explicitly noted. Readers must satisfy themselves as to the suitability of said information, procedures, methods, and recommendations prior to use. TELONE™ and Teleos Ag Solutions™ are registered trademarks of Teleos Ag Solutions, Inc. TELONE™ by Teleos is a federally Restricted Use Pesticide. Always read and follow label directions.